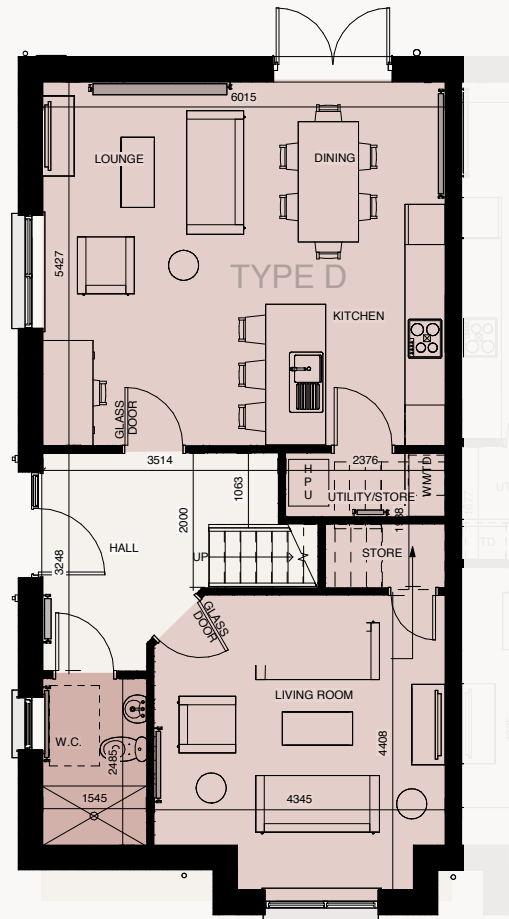


Meadowsweet

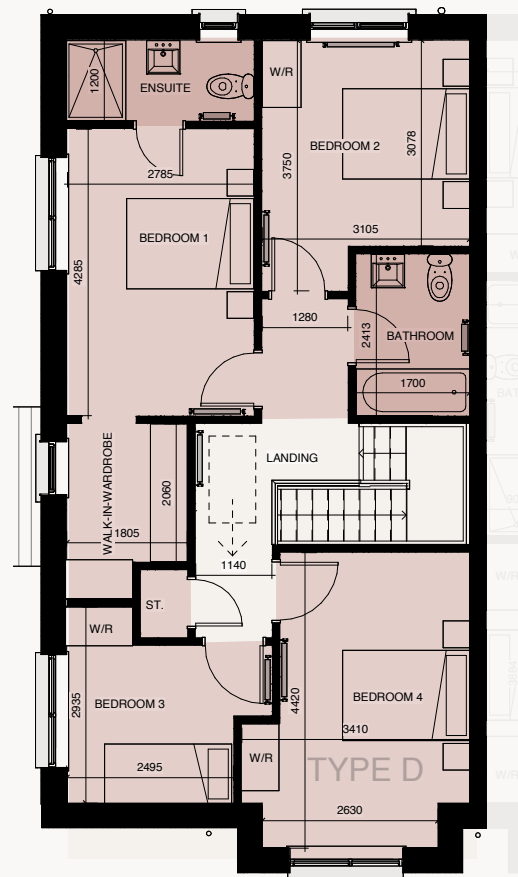
House Type D

Attic space suitable for storage only – not suitable for habitable conversion as not fitted with attic trusses/ roof light.

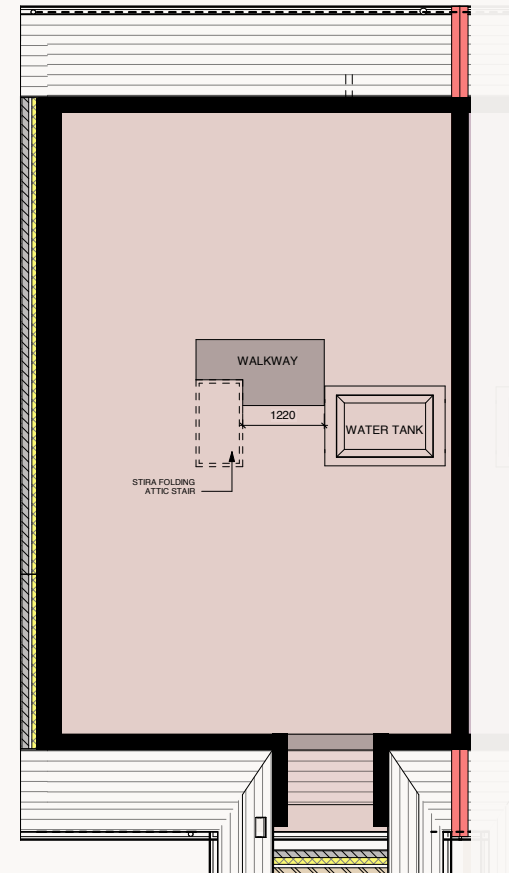
-  Semi-detached
-  4 bed
-  3 bathrooms
-  Gross floor area of 141.5m² (1,522 sq ft)
-  Brick & Render Finish



1 GROUND FLOOR



2 FIRST FLOOR



1 ATTIC PLAN

CLICK
HERE



Don't Miss Out – Register
to keep updated on the
progress of this fabulous
development.

Liberty
Blue
ESTATE AGENTS



Value

Copper Close homes represent excellent value. They are built for life, by local developers you can trust, to the most exacting standard.



Sustainability

Every home in Copper Close is A Rated for energy use with the very latest in thermal performance insulation, air to water heat pumps, smart glazing and thoughtful landscaping featuring native plants.



Design

Copper Close homes are designed by Waterford based international architects Fewer Harrington. The thoughtful design gives space for you and your family to live, breathe and grow. Natural light is used to great effect.



Quality

Brought to you by Whitebox Property Developments, you can be assured that your Copper Close has been built to last with the best materials.



House Types

