


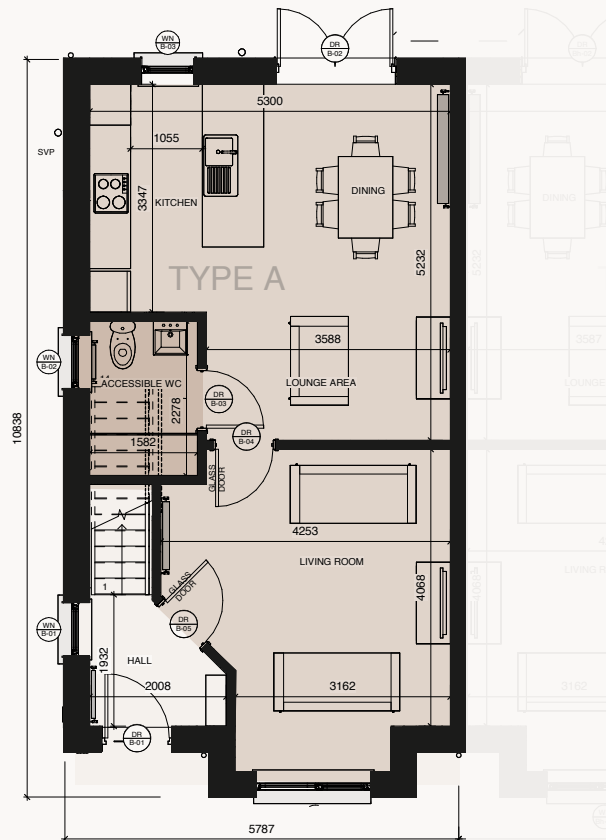


# Sorrel

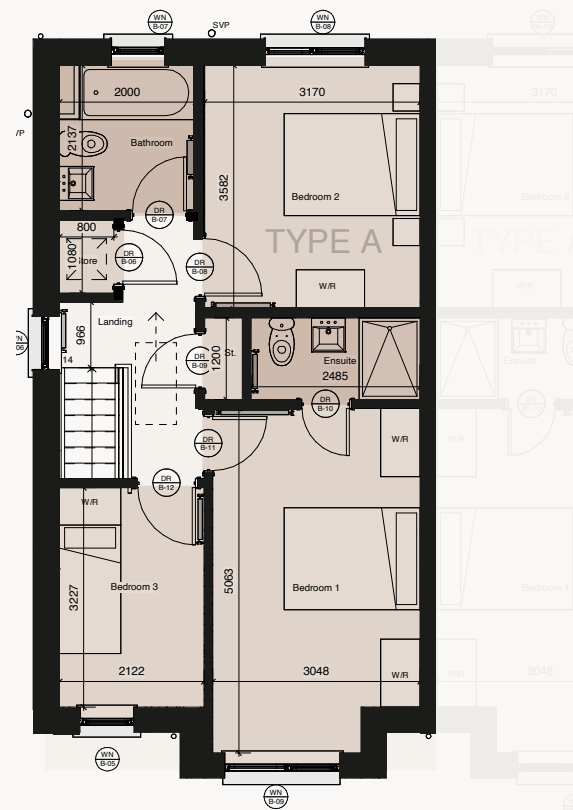
## House Type A

The attic space is conversion-ready with planning permission in place\*. Fitted with a Stira folding stairs, light fitting, Velux window, and full-height roof trusses. The roof has been designed to accommodate up to 2 rooms making the space ideal for a home office, guest bedrooms or kids playroom.

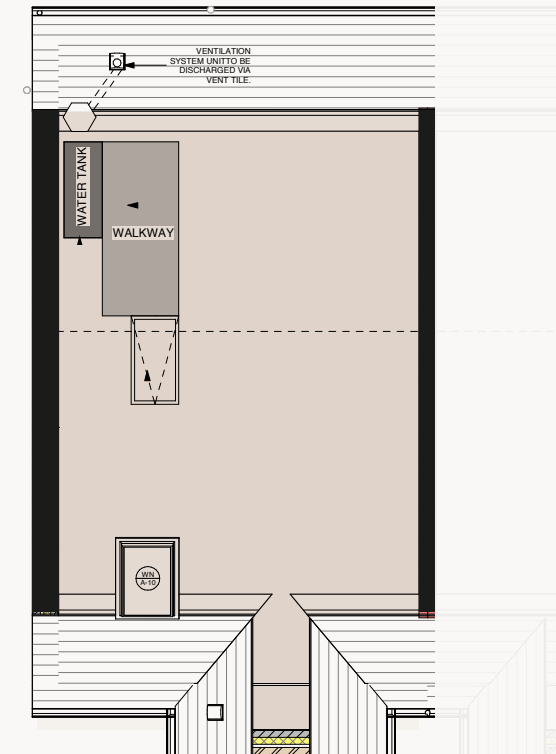
-  Semi-detached
-  3 bed
-  3 bathrooms
-  Gross floor area of 103m<sup>2</sup> (1,108 sq ft)
-  Brick & Render Finish



1 00 Ground Floor  
Scale @ A1: 1 : 50



2 01 First Floor  
Scale @ A1: 1 : 50



3 Attic Plan  
Scale @ A1: 1 : 50

\*Planning permission as approved on planning file. Deviations from approved planning drawings may require further planning. The timing to complete alterations must be within the statutory time limit for standard planning. Separate advice may be required.

CLICK  
HERE



Don't Miss Out –Register  
to keep updated on the  
progress of this fabulous  
development.

Liberty  
Blue  
ESTATE AGENTS



### Value

Copper Close homes represent excellent value. They are built for life, by local developers you can trust, to the most exacting standard.



### Sustainability

Every home in Copper Close is A Rated for energy use with the very latest in thermal performance insulation, air to water heat pumps, smart glazing and thoughtful landscaping featuring native plants.



### Design

Copper Close homes are designed by Waterford based international architects Fewer Harrington. The thoughtful design gives space for you and your family to live, breathe and grow. Natural light is used to great effect.



### Quality

Brought to you by Whitebox Property Developments, you can be assured that your Copper Close has been built to last with the best materials.



House Types

